

**RGR** SECURITY  
SOLUTIONS, LLC  
DVR Surveillance Specialists



***KLR-View Pro Series***

***Digital Video Recording***

10026-A S. Mingo Road, #188  
Tulsa, OK 74133-5700



...would like to introduce you to the latest development in digital security technology. The ***KLR-View Pro Series DVR*** is designed for use with Closed-Circuit Television (CCTV) systems. Choose from a PC based software, utilize your existing PC with a USB interface, or internet camera Access software. PC based systems utilize **professional** software, each having special options depending upon your specific requirements.

The ***KLR-View Pro Series*** software is an all-in-one security DVR for local and remote networked surveillance environments. It features mighty networking and quality transmission that enable remote access to surveillance sites using powerful remote applications. The system is designed to simplify the integration of Remote Access, Archive Retrieval, Point Of Sale, and other advanced options. It is a comprehensive and powerful solution suitable for the areas where constant video and audio surveillance is critical, such as **fast food restaurants, day care/preschools, government offices, police stations, convenience stores, large car dealerships and lawn/farming equipment dealerships.**

All of our systems offer performance unmatched by systems costing thousands more. The user friendly interface makes it a perfect fit for small and large businesses of all types.

## CUSTOM BUILT SYSTEM

Each system is built to **your specifications** depending on the size of your property, lighting conditions, your business environment and video archive needs. The professional PC based software produce high quality, multi-channel systems that utilized the most advance digital video compression technologies to bring you the highest picture quality and exceptionally sharp color images. Video stream compression allows for 30 days archive video footage from 16 cameras and up to 30 frames per second per camera. The possibilities are endless for CCTV, especially as the technology continues to develop.

- KLR-View***  
***Pro Series DVR***
- Expandable in Groups of 4 up to 16 Cameras per System
  - Remote Client Software w/ unlimited licenses
  - High Resolution Recording
  - Video Picture Adjustments
  - Point of Sale Overlay
  - Pan/Tilt/Zoom Camera Controls
  - Image Tracking
  - Motion Detection or Constant Recording
  - Audio Recording
  - Picture Masking Tool
  - Digital Zoom
  - Multi Camera Playback/ Quick Search
  - Scheduled Functions
  - Multi-level Password Protected
  - Remote Viewing via Cell Phone or PDA
  - Alarm Monitoring Options
  - E-mail Notification
  - Web Server Interface
  - Easy to Use
  - Reliable

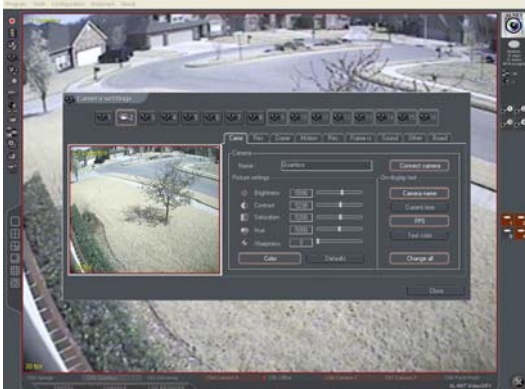


## SURVEILLANCE BENEFITS

While your security issues may not be solved by a surveillance system alone, we have proven that our system has significantly reduced and deterred **inventory losses** (reportedly as much as 1% in the first month in a fast food restaurant), **workers compensation claims, cash drawer shortages, customer liability claims, disorderly conduct, property damage, theft, vandalism, and harassment issues**. Additionally, the video archives may be a useful training tool for managements use to operate your business more efficiently.

## BUSINESS ENVIRONMENTS

The **KLR-View Series** DVR systems can be used in any business, large or small. Powerful outdoor inferred bullet cameras can be installed on buildings overlooking property for hundreds of yards detouring theft and vandalism 24 hours a day. Distributed DVR equipment could be commonly used on the large properties where **several buildings** are part of the campus. Each building on the campus can have a DVR that can be connected to the local area network (LAN) system allowing live viewing, archive retrieval, and remote access between DVR's. This use of several DVR's will also work in **multiple floor buildings** that are connected to the LAN system of the structure. The access to the recorded archives or live viewing could be seen from any place in the building as well as remote viewing.



## EASY SET UP

In minutes the user can configure the recording and operation of the system, easily setting the recording functions, playback, and remote viewing options for each camera. **Motion detection parameters and sensitivity** can be set independently for each camera. This feature significantly decreases the amount of hard disk space required for video archives. The user can select the area of interest where motion will be detected and exclude the rest using the unique **picture-masking tool**. This is especially helpful in ignoring the effects of blowing papers on a bulletin board, tree movement, traffic, and small animals.

## ARCHIVE FEATURES

With the **Time Line** feature you can quickly review video clips to find an incident or event in one-second increments. The search is as easy as selecting the desired date and time from the calendar then highlighting the time frame. The user can then print an image or save the entire video clip to a file, hard drive, CD or DVD. The video clips can be viewed on any PC with Windows Media Player. **Speed Search** allows the user to search for motion in a selected, boxed-off area saving you time in the search mode. The Archive feature also allows the user to take **snapshots of an event/person** that can be saved to a JPEG file.



## POINT-OF-SALE OVERLAY

This feature allows the user to **monitor all register transactions** as an overlay on live and archive video. Verify transactions such as voids, discounts or promotion prices to reduce shrinkage and protect your inventory. While working in conjunction with Data Capture the system will give you the tools to remotely monitor live cashier transactions, record videos for retroactive analysis, and to activate output alarms.



- **POS Video Text Overlay:** Transaction text messages can be displayed on screen and on the video files. You may also choose to hide data from the screen view.
- **POS Field Filter:** Allows the user to use pre-defined transaction criteria to search in a field filter that will display the results in a newly created System Log. For example, all the transactions containing the keyword "VOID" will create an entry in the System Log allowing management to verify such transaction.

- **Customer Flow Counting:** Allows the system to calculate incoming and outgoing customers or cars for customer statistics.

### Case Study\*:

Within **one month** after the initial use of POS-DVR surveillance solution, a nationwide convenience store substantially reduced POS shrinkage by 98%. Within **two months** after the initial use of the this system, the convenience store identified five refund frauds and other wrongdoings, and several shoplifting cases.

(\*Per GeoVision)

## REMOTE VIEWING

The **KLR-View Series** DVR systems include Remote Client software to provide easy and simple access to video archives from the server using an **internet or dial-up connection**. Monitor live video, review archive video, and take snapshots from the convenience of your home or additional office. The user can review video then transfer the archive video clip in AVI file format, which can be viewed on any PC. The files can then be backed up to a hard drive, CD, or DVD.

## MULTI CONNECT

The remote Client Software allows the user to **connect up to 160 host sites** from one location. This makes managing multiple store/office locations possible with the use of a single monitoring center. Additionally, the user is able to copy and save remote files without disrupting the operating system at each site.

## BUILT-IN WEB SERVER

When the built in password controlled web server is enabled, the user can view their property from **any computer connected to the internet** (Wi-Fi connection). For example, **preschool** parents will appreciate being able to have remote access to view their child's activities. This is a new trend with preschools that is fast becoming a sought after benefit in choosing a preschool. When traveling nationally or internationally, you will be able to keep a close eye on your business from **anywhere in the world** using a Wi-Fi connection.



## ABOUT CCTV CAMERAS

Choosing an appropriate camera and lens can be a difficult process, but with the personal attention from our technicians, you can feel confident that they will guide you toward the results you are looking for. When choosing a camera there are a couple of things to consider. **Resolution** refers to a camera's ability to see detail, while the angle of coverage deals with how much area is being placed onto the monitor for viewing. The highest resolution camera will not be able to identify a person's face if the camera is watching an area of 100' in width, whereas the lowest resolution camera will give you a facial identification if the camera is only viewing the width of a doorway. Our professional technicians will help you match the covered area to the surveillance objective giving you the appropriate camera view with the best quality.



## TYPES OF CAMERAS

**Weatherproof Day/Night Bullet Camera**-The tiny sleek look makes these cameras ideal for both indoor and outdoor installs. They can be mounted on the ceiling or wall. This camera gives an excellent quality color picture by day, then change to black and white low-light mode, switching on its Infrared bulbs at night for unparalleled vision even when the lights are out. Swivel mounts on the camera body allows installation at ANY angle, keeping the image straight up and down.



**High-Resolution Dome Camera**- This small discreet dome camera is extremely versatile and is designed to blend into high fashion applications such as building entrances, retail stores, and restaurant lobbies. An adjustable mounting bracket allows this camera to be installed on virtually any ceiling or wall. Lens' are chosen specifically for the application needed.

**PTZ (Pan, Tilt, Zoom) Dome Cameras**-Take control of your camera with a high resolution, high end PTZ camera. Manipulate this camera with a joy-stick control, DVR keyboard or remote client software. You will have the ability to move the camera up, down, left or right, and even zoom in on a figure. This camera can also be programmed to pan in set increments or be stationary. Choose from the indoor model or weatherproof outdoor models.



## ***KLR-VIEW PRO SERIES DVR***

### **1-8 Camera PC Specs:**

3.0 GHz Intel Pentium 4 w/ HT CPU  
Windows XP Professional  
1 Gig RAM  
250 Gig Disc Space (up to 2 Terabyte)  
24 Bit (True-color) VGA Card  
(128 MB RAM on board)  
DVD R/W Optical Drive  
10/100/1000 Mbps Ethernet Port  
17" LCD Monitor  
Keyboard, Mouse  
Appropriate Surveillance Software  
500 VA UPS Battery Backup  
8 Camera Power Supply

### **9-16 Camera PC Specs:**

3.0 GHz Intel Pentium 4 w/ HT CPU  
Windows XP Professional  
1 Gig RAM  
500 Gig Disc Space (up to 2 Terabyte)  
24 Bit (True-color) VGA Card  
(128 MB RAM on board)  
DVD R/W Optical Drive  
10/100/1000 Mbps Ethernet Port  
17" LCD Monitor  
Keyboard, Mouse  
Appropriate Surveillance Software  
500 VA UPS Battery Backup  
16 Camera Power Supply

## **ADDITIONAL SOFTWARE OPTIONS**

### **VGA TO VIDEO INPUT**

This interface will record transactions made from your company computer to the DVR. The transactions will be in your archive video of the DVR along with the video archives from your surveillance cameras.

### **ALARMING**

This user friendly software also supports up to **12 remote switches and 16 inputs** for additional alarm features. These features allow for optional extended system functionality to control and process receiving alarm signals from sensors, remote controls and electrical devices such as: **building security system, lights, gates, and appliances**. These alarm inputs and relays are programmed as **scheduled** events. The **Scheduler** will automatically and instantly notify designated **email address**' of an event. As an additional option, the software allows **phone numbers** (up to four) to be programmed into a dialer to immediately notified management of an alarmed event.

## **ADDITIONAL SERVICES**

While our specialty is DVR surveillance systems, we also have the capability to **install home /business alarm systems, badge readers, electronic doors, and more**. If you have a specific need not found in this brochure, please give us a call. We will find the product you are needing to further secure your business.

In addition, we have the capability to **MONITOR** your system's DVR at our office. We will continuously record the camera view that includes the DVR. Should the DVR be stolen or damaged we will have secure archive video of the perpetrator.



## PERSONAL SERVICE

We will continue to provide **prompt customer service after the installation** of your system. We are ready to assist you at a moments notice to answer questions or assist with software functions. A local technician will come to your location if you need hardware adjustments or additional training on the software. Please feel free to call on us 24 hours a day, seven days a week, when you are needing assistance.

## WARRANTY

Equipment and labor are fully covered for **one year** at completion of install (assuming equipment was not abused, mishandled or vandalized in any manner). DVR computer must be used for its intended use **ONLY**, which is recording camera video. Computer is not warranted against internet viruses.

## OUR MISSION

*RGR Security Solutions is dedicated to the protection of people and property. Our profound commitment to loss prevention will provide our clients with peace of mind. We aspire to become the leading provider of asset protection systems through the latest technology, superior system design, and quality products customized for our clients. As a small company, we strive to provide a level of dedication, personal service, and affordable pricing that is unmatched in our industry.*

## CONTACT US

Office Phone: 918-398-8129

[sales@rgrsecurity.com](mailto:sales@rgrsecurity.com)

Bob Robinson, President of Operations

Kristine Robinson, Vice President Sales

